



Thames Path Relay – 2026

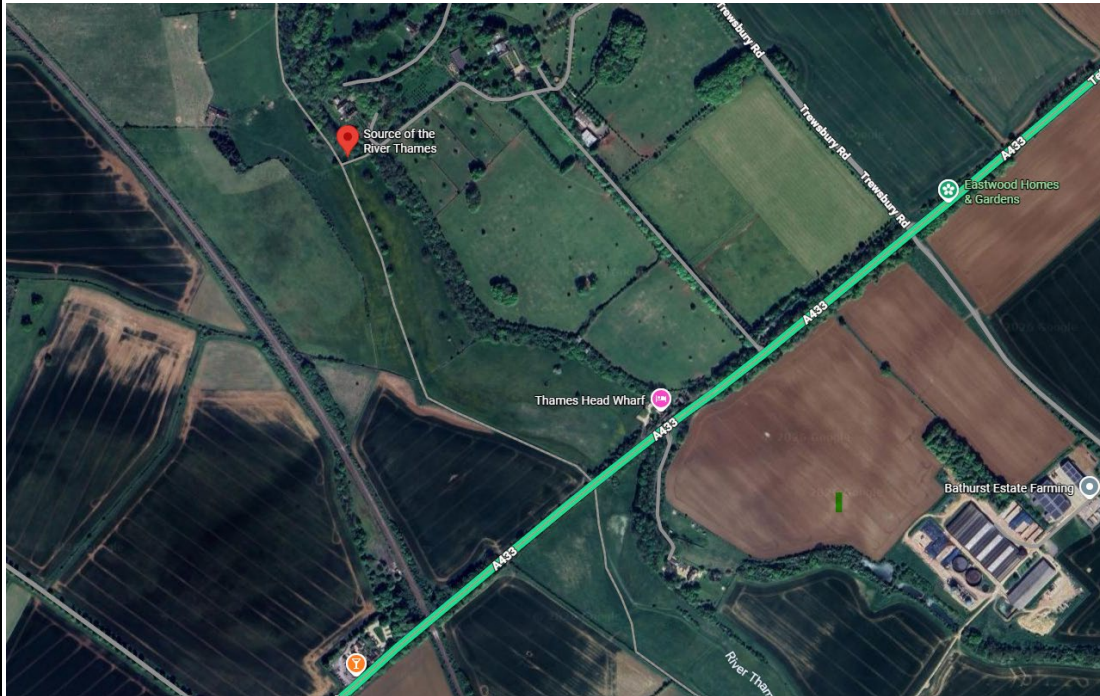
Sections breakdown, details and what3words addresses.

Relay Day	Date	Day	Start	End
1	5-Jun	Friday	Start: Source - Kemble. Marker post in Trewsbury Mead. what3words///fame.winds.jumped	End: Ashton Keynes - High Road Junction. What3words///culling.ridge.sediment
Hosted by: Wild Swim with support from the Thames Path Volunteers				
			<p>Date: 5th June</p> <p>Start time: 2pm</p> <p>Estimated finish time: 6pm</p> <p>Difficulty: Easy</p> <p>Distance: 6.8miles / 11km</p> <p>Type: linear</p> <p>Description: This first section of our relay takes us from the source of the Thames near Kemble to Ashton Keynes. The Thames Path in this area traces the river in its quietest, most intimate form. Here the Thames is often dry, or little more than a tiny stream, winding gently through open fields, wet meadows and reed-lined banks, with views across the flat Cotswold landscape. The path is peaceful and largely traffic-free, passing grazing cattle, small footbridges and birdsong before reaching the picturesque village of Ashton Keynes, where the river begins to feel more established yet still retains a strong sense of rural calm.</p>	

Transport: Kemble station is the nearest and most convenient public transport link to the Thames source. This is the station most walkers use when starting the Thames Path at its source. It lies on the Great Western Railway main line between London Paddington and Gloucester/Cheltenham.

- Direct trains from London Paddington (around 1 hour 15 minutes)
- Also served by trains from Swindon, Gloucester and Cheltenham

Address and images of meeting point: Off the A433, Cirencester, GL7 6NY



2	6-Jun	Sat	Start: Ashton Keynes - High Road Junction. What3words///culling.ridge.sediment	End: Cricklade – outside Meadow Bridge School. What3words///outgoing.worth.loopholes
---	-------	-----	--	--

Hosted by: Thames Path National Trails Team

			<p>Date: 6th June</p> <p>Start time: 11am</p> <p>Estimated finish time: 1:30pm</p> <p>Difficulty: Easy</p> <p>Distance: 5.4miles / 8.7 km</p> <p>Type: linear</p> <p>Description: This section of our relay takes us from Ashton Keynes to Cricklade, offering a gentle, scenic walk through classic Cotswold water meadows as the young river flows more confidently through the landscape. Leaving the canals and ponds around Ashton Keynes, the path follows grassy banks and narrow channels, often crossing small bridges and skirting lush, low-lying fields alive with birdlife. The route remains peaceful and rural, with wide skies and open views, before gradually approaching Cricklade, where historic buildings and the presence of a thriving market town mark the Thames' growing importance and character.</p> <p>Transport:</p> <p>By Car: This is the most direct option. Ashton Keynes is close to the A419, between Swindon and Cirencester. Free on-street parking is usually available around the village, including near the High Street.</p> <p>By Bus: Ashton Keynes is served by local rural bus routes, stopping close to the High Street (e.g. Village Hall Garage, The Memorial, Swan Lane), however services are infrequent, so checking the timetable before travel is essential.</p> <p>Main bus services:</p>
--	--	--	---

- **C54** – Connects **Lower Minety / Ashton Keynes / Cirencester**
- **93A** – Links villages including **Malmesbury, Somerford Keynes, Ashton Keynes and Cirencester**

Helpful links:

- Bustimes (live-style overview): <https://bustimes.org/localities/ashton-keynes>
- Village info page: <https://ashtonkeynes.org.uk/index.php/village-facilities/local-services/57-bus-services>

Address and images of meeting point: High Rd, Ashton Keynes, Swindon SN6 6NL

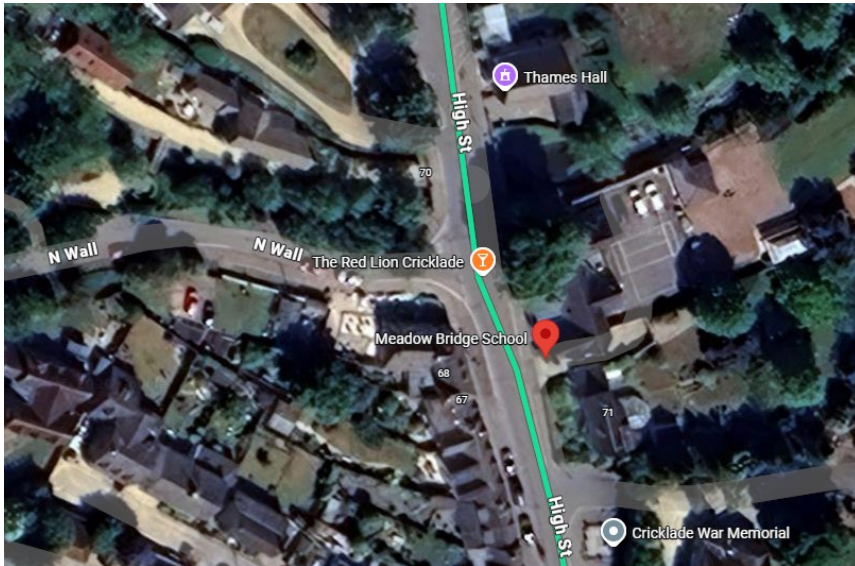


3	7-Jun	Sun	Start: Cricklade – outside Meadow Bridge School. What3words:///outgoing.worth.loopholes	End: Lechlade - Ha' Penny Bridge (just beside it, away from traffic). What3words:///judges.drizzly.trains
Hosted by: Thames Path National Trails Team				
			<p>Date: 7th June</p> <p>Start time: 10am</p> <p>Estimated finish time: 3:30pm</p> <p>Difficulty: moderate</p> <p>Distance: 10.7m / 17km</p> <p>Type: linear</p> <p>Description: Join us on day three of our relay as we follow the Thames Path from Cricklade to Lechlade. In this walk you will experience the river as it broadens and settles into a more recognisable waterway, weaving through water meadows, willow trees and peaceful countryside. Leaving the historic market town of Cricklade, the path feels secluded and pastoral, with frequent views of slow-moving water, grazing livestock and abundant birdlife. As the walk continues, the river gently meanders past St John's Lock before arriving at Lechlade, where stone bridges, boats and riverside pubs signal the Thames' gradual transition from quiet rural stream to navigable river.</p> <p>Transport:</p> <p>By Car (Most Direct): the meeting point is just outside the Red Lion Cricklade, with parking in Cricklade town centre.</p> <p>By Bus: Cricklade is well served compared with surrounding villages. Key bus services are:</p> <ul style="list-style-type: none"> • Stagecoach 51 / 51X – Swindon ↔ Cricklade ↔ Cirencester ↔ Cheltenham. Buses stop in Cricklade High Street. • Local services (incl. 53 / 53A on some days) - Connect Cricklade with nearby villages and Swindon. 	

Useful timetable links:

- <https://www.stagecoachbus.com/routes/west/51/swindon-cirencester>
- <https://bustimes.org>

Address and images of meeting point Near Meadow Bridge School, High St, Cricklade, Swindon SN6 6DD

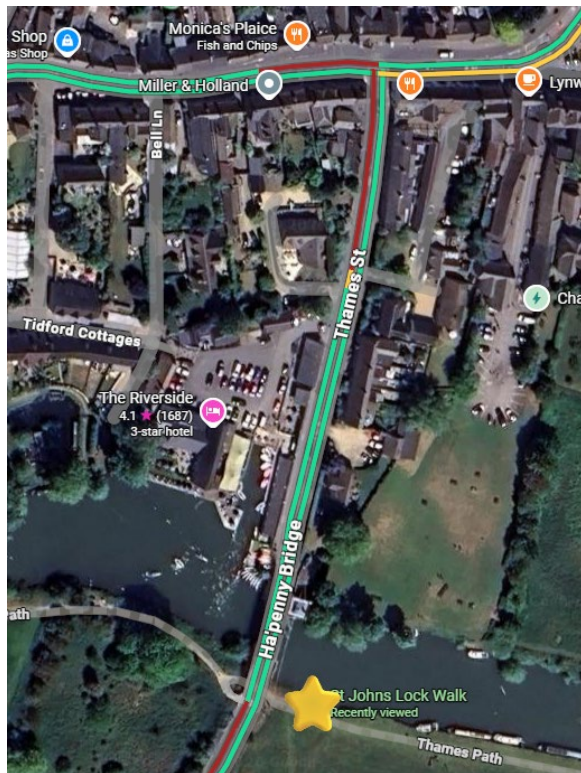


4	8-Jun	Mon	Start: Lechlade - Ha' Penny Bridge (just beside it, away from traffic). What3words:///judges.drizzly.trains	End: Radcot - Radcot Bridge. What3words:///waddled.scrambles.frame
Hosted by: Residents and Thames Path National Trails Team				
			<p>Date: 8th June</p> <p>Start time: 10am</p> <p>Estimated finish time: 2pm</p> <p>Difficulty: moderate</p> <p>Distance: 6.3m / 10km</p> <p>Type: linear</p> <p>Description: Today's leg of the relay follows the Thames Path from Lechlade to Radcot. The day will bring a tranquil riverside walk through some of the most unspoilt countryside along the upper Thames. Leaving Lechlade, the path follows the wide, slow-moving river as it curves through open meadows and farmland, with long views, quiet towpaths and frequent glimpses of boats drifting by. The landscape feels expansive and timeless, with the river as a constant companion, before the walk concludes at the historic Radcot Bridge, one of the Thames' oldest crossings, set in a peaceful and evocative rural setting.</p> <p>Transport:</p> <p>By Car (Most Direct): Located on the A361. Easy road access. Swindon (~25 minutes), Cirencester (~30 minutes), Oxford (~45 minutes). Parking available in Lechlade town centre (High Street / Market Place), then walk to the bridge – charges apply.</p> <p>By Bus: Main bus services serving Lechlade:</p> <ul style="list-style-type: none"> • Pulhams route 64 – Swindon ↔ Highworth ↔ Lechlade ↔ Carterton ↔ Witney 	

- Stagecoach route 77 – Cirencester ↔ Fairford ↔ Lechlade ↔ Highworth

Both stop at Lechlade Market Place or St John's Street, within 2–3 minutes' walk of Ha'penny Bridge.

Address and images of meeting point Thames St, Lechlade GL7 3AQ



5	9-Jun	Tues	Start: Radcot - Radcot Bridge. What3words:///waddled.scrambles.frame	End: Newbridge - Maybush Pub. What3words:///emerge.simmer.urban
Hosted by: Sustainable Wantage				
			<p>Date: 9th June</p> <p>Start time: 10am</p> <p>Estimated finish time: 3pm</p> <p>Difficulty: moderate</p> <p>Distance: 10miles / 16km</p> <p>Type: linear</p> <p>Description: The Thames Path from Radcot Bridge to Newbridge is a calm and scenic stretch that continues through broad floodplain meadows and quiet farmland. From the ancient stone arches of Radcot Bridge, the path follows the gently meandering river past willows, open pasture and the peaceful setting of Rushey Lock. The walk feels remote and timeless, with wide skies and uninterrupted views across the valley, before ending at Newbridge, another historic crossing that reinforces the sense of the Thames as an enduring rural presence.</p> <p>Transport: Radcot Bridge is on Radcot Lane, just outside the village of Radcot, near the River Thames and the Swan Inn. There are no shops, bus stops or station at the bridge itself.</p> <p>Easily reached by road from: Faringdon (~10 minutes), Lechlade (~10 minutes), Oxford (~45 minutes), Swindon (~35 minutes). Some roadside parking can be found nearby.</p> <p>By Bus (Limited – Last Stretch is on Foot):</p> <p>Buses do not stop at the bridge itself. Nearest bus stops are The Swan Hotel, Radcot and Thrupp Turn.</p> <p>These stops are served by:</p>	

- Bus 19
- Bus 409

From either stop, it's a **10–15 minute walk** along Radcot Lane to the bridge (narrow road, minimal pavement). Services are infrequent, with very limited evening and Sunday buses so be sure to plan ahead.

Car: Radcot Bridge. There is a large open car park here, but you will need permission from Te Olde Swan pub to park.

Address and images of meeting point Radcot Bridge, Radcot, Bampton OX18 2SX



6	10-Jun	Weds	Start: Newbridge - Maybush Pub. What3words:///emerge.simmer.urban	End: Eynsham Lock. https://w3w.co/misted.scribbled.dragging
---	--------	------	--	---

Hosted by: Walk the Thames and Sustainable Wantage

			<p>Date: 10th June</p> <p>Start time: 10am</p> <p>Estimated finish time: 2pm</p> <p>Difficulty: moderate</p> <p>Distance: 7.9m / 13km</p> <p>Type: linear</p> <p>Description: This stretch of the relay follows the Thames Path from the Maybush Inn at Newbridge to Eynsham Lock and is another peaceful riverside walk as the Thames flows steadily towards Oxford. Leaving the welcoming bustle of the pub and historic bridge behind, the path follows well-kept grassy banks and shady stretches beneath mature trees, with frequent views of the broad, gently moving river. The surrounding meadows and farmland create a calm, open feel, and boats become more frequent as the walk approaches Eynsham Lock, where the river's growing sense of activity contrasts gently with the quiet countryside just passed.</p> <p>Transport:</p> <p>Car:</p> <ul style="list-style-type: none"> • Parking at Maybush is limited (please do not use the pub carpark unless arranged with the owners as the parking is for pub users only), but there are free spaces in the public lay-by on the A415 (south side of the bridge). • Roadside parking in Standlake. Lots of residential roads you can park on (please park with consideration for residents). From Standlake it is a 10-minute walk back to the Maybush. residential roads in Standlake
--	--	--	---

Bus: The Oxford – Witney Stagecoach bus services S1 and S2 stop the closest. Get off at Newbridge or Rose Revived and it is just a short walk to the Maybush pub.

Address and images of meeting point Newbridge Pub, Abingdon Rd, Newbridge, Witney OX29 7QD



7	11-Jun	Thurs	Start: Eynsham Lock. What3words:///misted.scribbled.dragging	End: Osney Bridge Oxford. What3words:///solar.tidy.invest
---	--------	-------	---	---

Hosted by: Des Garrahan- Thames Path Partnership vice chairman and Ramblers

			<p>Date: 11th June</p> <p>Start time: 10am</p> <p>Estimated finish time: 1pm</p> <p>Difficulty: Moderate</p> <p>Distance: 5.9miles / 9.4km</p> <p>Type: linear</p> <p>Description: As we leave Eynsham Lock and begin to wander towards Oxford this stage of our marks a gradual transition from open countryside into the edge of the city. Leaving the lock, the path follows the broad, steady river past meadows and tree-lined banks, with rowing boats and river traffic becoming increasingly common. As Oxford draws closer, college boathouses and bridges appear, adding energy and character to the walk, before the route finishes at Osney Bridge, where the Thames feels fully urban and closely woven into the life, history and architecture of the city.</p> <p>Transport:</p> <p>Car: Free car parking opposite Eynsham Pavilion on Oxford Road, a 10 min walk from here.</p> <p>Bus: Stagecoach E1 (Oxford ↔ Eynsham ↔ Witney) is the most frequent and reliable, running every 15–30 minutes during the day. Journey time from Oxford is approx. 15–20 minutes</p>
--	--	--	---

Address and images of meeting point Eynsham Lock, Cumnor, Witney OX29 4BY



8	12-Jun	Fri	Start: Osney Bridge Oxford. What3words:///solar.tidy.invest	End: Abingdon - Rye Farm Meadows / Car Park. What3words:///moth.major.basis
Hosted by: Pipsticks Walks				
			<p>Date: 12th June</p> <p>Start time: 9:30am</p> <p>Estimated finish time: 1:30pm</p> <p>Difficulty: moderate</p> <p>Distance: 9.5 miles / 15km</p> <p>Type: linear</p> <p>Description: Today's walk starts within our first main city on the river, Oxford, at Osney Bridge but as we wind our way towards Abingdon it soon finds open meadows again as it eases away from Oxford. Leaving the city behind, the path passes willow-lined banks, quiet backwaters and wide meadows, with the steady flow of the Thames creating a calm, unhurried atmosphere. The route feels increasingly rural, with expansive views and abundant wildlife, before reaching Rye Farm Meadow on the edge of Abingdon, where the town's historic connection to the river becomes gently apparent once again. Please book a free place on this walk - BOOKING LINK: Thames Path Anniversary Relay — Pipsticks Walks</p> <p>Transport:</p> <p>On Foot: Walking (best option from city centre or station). From Oxford Rail Station it is approximately 10–15 minutes. Rail station → follow Botley Road west → cross Osney Bridge.</p> <p>Bus: The bridge is very close to many bus routes, with buses running every few minutes from the city centre. Best stops are Osney Island or Westgate / Frideswide Square (short walk).</p> <p>Common bus routes</p>	

- S1 (Oxford ↔ Eynsham ↔ Witney ↔ Carterton)
- E1 (Oxford ↔ Eynsham ↔ Witney)
- 4A / 4B (Osney Island ↔ Botley / Harcourt Hill)
- 63 / 63S (Oxford ↔ Longworth)

Train: Trains into Oxford Rail station are frequent. From here it is a 10-15 minute walk to the bridge.

Car: Limited parking, so not recommended. Some parking is available in West Oxford Community Centre.

Address and images of meeting point: Osney Bridge, Botley Rd, Oxford OX2 0AA



9	13-Jun	Sat	Start: Abingdon - Rye Farm Meadows / Car Park. what3words///moth.major.basis	End: Days Lock Dorchester. Parking in Dorchester and public footpaths from Dorchester to the Lock. What3words///powering.rotate.force
---	--------	-----	---	---

Hosted by: Thames Path Volunteer and Team

			<p>Date: 13th June</p> <p>Start time: 10:30am</p> <p>Estimated finish time: 2:30pm</p> <p>Difficulty: moderate</p> <p>Distance: 8.1miles / 13 km</p> <p>Type: linear</p> <p>Description: This walk takes us from Rye Farm Meadow in Abingdon to Day's Lock at Dorchester and follows a pleasantly varied stretch of river as the Thames winds through open countryside and historic settlements. Leaving the wide meadows behind, the path passes shaded banks, backwaters and long riverside views, with the river flowing calmly alongside fields and small wooded sections. The route feels peaceful and pastoral, gradually approaching Dorchester-on-Thames, where the presence of boats, the lock and the village's historic abbey provide a sense of quiet character and arrival at one of the Thames Path's most charming locations.</p> <p>Transport:</p> <p>Car: Park in Rye Farm Meadows Car Park, which is the meeting point. Charges apply.</p> <p>Bus: Use bus stops at Bridge Street (closest) or High Street, then you can walk 5 minutes to Rye Farm Car Park</p> <p>Bus routes from Oxford that work well:</p> <ul style="list-style-type: none"> • X2 – Oxford → Abingdon → Didcot
--	--	--	---

- **X3** – Oxford → Abingdon
- **X15** – Oxford Rail Station → Abingdon → Witney
- **35** – Oxford → Radley → Abingdon

Address and images of meeting point: Rye Farm car park, Abingdon OX14 3HY



10	14-Jun	Sun	Start: Days Lock Dorchester. What3words:///powering.rotate.force	End: Wallingford - Cattle Market Car Park. What3words:///bluff.making.stuffing
Hosted by: Thames & Wheatley Ramblers				
			<p>Date: 14th June</p> <p>Start time: 10am</p> <p>Estimated finish time: 12:30</p> <p>Difficulty: Moderate</p> <p>Distance: 5.3miles / 8.5km</p> <p>Type: linear</p> <p>Description: The walk first passes below Castle Hill, one of the two ‘Wittenham Clumps’, then follows field edges mainly alongside the river through Shillingford to Benson. Here the path crosses the river via a newly constructed walkway over the weir. This opened to the public earlier this year, more than three years after it was first shut for safety reasons in November 2022. It is then a short walk into the historic town of Wallingford. Option to meet in Dorchester, Oxford Road, adjacent to sports field (What3Words: ///kite.flux.sundial) at 9:15am, to walk to Day's Lock to start the section at 10.00am. Return to Dorchester by X40 bus. Assistance Dogs only.</p> <p>Transport: Access is on foot only from nearby villages or car parks. The walk from the village to the Lock will take approx. 25 minutes.</p> <p>Car: parking in Dorchester and public footpaths from Dorchester to the Lock.</p> <p>Bus: The village itself is well served by buses. Most useful bus services:</p>	

- X40 / NX40 (River Rapids) – Oxford ↔ Wallingford ↔ Reading
- 138 – Wallingford ↔ Dorchester ↔ Didcot
- D1 – Wallingford ↔ Dorchester ↔ Didcot

These run via the Dorchester village stops (The Abbey, Memorial, Bridge)

Address and images of meeting point Days Lock Dorchester, Little Wittenham, Abingdon OX10 7JQ



11	15-Jun	Mon	Start: Wallingford - Cattle Market Car Park. What3words///bluff.making.stuffing	End: Goring & Streatley - just off the trail by Goring Lock. What3words///raced.taster.seemingly
Hosted by: Thames Path National Trail Volunteers				
			<p>Date: 15th June</p> <p>Start time: 10am</p> <p>Estimated finish time: 13:30</p> <p>Difficulty: Moderate</p> <p>Distance: 6.8miles / 11km</p> <p>Type: linear</p> <p>Description: This walk takes us from Wallingford to Goring and Streatley along one of the most dramatic and picturesque sections of the trail set within the wooded hills of the Chilterns and North Wessex Downs. Leaving Wallingford's historic streets behind, the path follows the river as it narrows slightly and curves between rising chalk hills, with wooded slopes, open fields and quiet towpaths creating a strong sense of natural enclosure. The scenery becomes increasingly striking as the walk enters the Goring Gap, where the Thames cuts cleanly through the hills, before arriving at the twin villages of Goring and Streatley, linked by their elegant bridge and surrounded by some of the most memorable river landscapes on the entire Thames Path.</p> <p>Transport:</p> <p>Car: Park in Cattle Market Car Park – charges apply</p> <p>Bus: Wallingford is well served by buses, and the car park is only 3–5 minutes' walk from the main bus stops. Best stops to use are Market Place or Morrell Place, Wallingford.</p> <p>Main bus routes</p>	

- X40 / NX40 (River Rapids) – Oxford ↔ Wallingford ↔ Reading
- 33 / 33A – Abingdon ↔ Wallingford ↔ Henley
- 134 – Goring ↔ Wallingford
- D1 / 138 – Didcot ↔ Dorchester ↔ Wallingford
- Local town services (131 circular)

Address and images of meeting point: Cattle Market Car Park, Wallingford OX10 0HF



12	16-Jun	Tues	Start: Goring & Streatley - just off the trail by Goring Lock. What3words:///raced.taster.seemingly	End: Caversham Bridge (in the green space just before the bridge, by Reading Rowing Club). What3words:///myself.aware.song
Hosted by: Thames Path National Trail Volunteers				
			<p>Date: 16th June</p> <p>Start time: 10am</p> <p>Estimated finish time: 3:30pm</p> <p>Difficulty: Moderate / hard (due to length)</p> <p>Distance: 11.1 miles / 18km</p> <p>Type: linear</p> <p>Description: This walk from Goring to Caversham Bridge follows the river as it gradually leaves the chalk hills behind and flows towards the busy town of Reading. Leaving the twin villages of Goring and Streatley, the path winds through open meadows and wooded stretches beneath the Chiltern slopes, passing Whitchurch Lock and the village of Pangbourne, where riverside buildings and boats add life to the walk. The route remains scenic and varied, with long waterside views and occasional quiet backwaters, before becoming more suburban as it approaches Reading, finishing at Caversham Bridge where the Thames feels broader, busier and firmly part of an urban setting once again.</p> <p>Transport:</p> <p>Train: Train to Goring, then a 1km walk to the Lock. Easiest option. Direct trains from:</p> <ul style="list-style-type: none"> ○ London Paddington → Goring: ~45–55 minutes ○ Reading → Goring: ~15 minutes ○ Oxford → Goring: ~55–70 minutes (often via Reading) 	

Car: Goring village has car parks and there is limited roadside parking in Streatley. Pleasenote, the lock itself has NO parking.

Address and images of meeting point: Goring Lock, High St, Goring, Reading RG8 9BA



13	17-Jun	Weds	Start: Caversham Bridge (in the green space just before the bridge, by Reading Rowing Club). What3words///myself.aware.song	End: Henley - Pavillion in Mill Meadows. https://w3w.co/chitchat.ferrets.braced
----	--------	------	--	--

Hosted by: Pipsticks and Walks Works

			<p>Date: 17th June</p> <p>Start time: 9:15am</p> <p>Estimated finish time: 3:45pm</p> <p>Difficulty: Moderate / hard (due to length)</p> <p>Distance: 11.7 miles / 18.8 km</p> <p>Type: linear</p> <p>Description: The Thames Path from Caversham Bridge to Henley-on-Thames is a varied and engaging walk as the river winds through a mix of suburbia, villages and classic Thames scenery. Leaving Reading behind, the path soon feels greener and more relaxed, passing wooded banks, meadows and riverside estates as it approaches Sonning. From this point the walk is especially attractive, with broad reaches of river, elegant houses, pleasure boats and open countryside. After Shiplake the trail follows a diversion through Harpsden Woods before arriving at Henley, where bridges, boathouses and the town's strong rowing heritage give the Thames a lively, celebratory feel. Please book a free place on this walk - BOOKING LINK: Thames Path Anniversary Relay — Pipsticks Walks</p> <p>Transport:</p> <p>Train: Plus a short walk of 10 minutes. Excellent rail connections from:</p> <ul style="list-style-type: none"> ○ London Paddington (≈ 25 mins) ○ Oxford (≈ 25 mins)
--	--	--	---

- Didcot, Newbury, Swindon, Bristol

Walk: Route from Reading Station:

- Exit station → follow signs for Town Centre
- Head north via Station Road / Friar Street
- Continue toward the river → Caversham Bridge

Car: Many car parks available, the closest being:

Caversham Centre Car Park, Paddock Road, RG4. 5–7 min walk to Caversham Bridge. Charges apply.

Riverside (Thames Side) Car Park, Richfield Avenue area (RG1). 7–10 min walk. Charges apply.

Address and images of meeting point: Richfield Ave, Reading RG1 8BD



14	18-Jun	Thurs	Start: Henley - Pavillion in Mill Meadows.What3words///chitchat.ferrets.braced	End: Marlow - Higgingson Meadow. https://w3w.co/cheeks.explorer.hides
Hosted by: Pipsticks				
			<p>Date: 18th June</p> <p>Start time: 9:30am</p> <p>Estimated finish time: 2:30pm</p> <p>Difficulty: moderate</p> <p>Distance: 8.8miles / 14km</p> <p>Type: linear</p> <p>Description: This walk is a popular and scenic stretch from Henley-on-Thames to Marlow. We will follow the river through wooded banks, open reaches and peaceful riverside villages. Leaving Henley’s busy waterfront behind, the path soon feels quieter as it passes rowing reaches, gentle curves of river and views towards the Hambleden Hills. The route remains close to the water for much of the way, passing Hurley Lock and its historic mill, with a calm, timeless atmosphere and frequent boats on the river. As Marlow approaches, elegant houses and the graceful suspension bridge come into view, marking a lively and attractive finish to one of the most enjoyable sections of the Thames Path. Please book your free place on this walk - BOOKING LINK: Thames Path Anniversary Relay — Pipsticks Walks</p> <p>Transport:</p> <p>Train: Train to Henley-on-Thames Station. Frequent services via Twyford. Easy connections from:</p> <ul style="list-style-type: none"> ○ London Paddington (≈ 55–65 mins incl. change) ○ Reading (≈ 30 mins) ○ Oxford (≈ 75–90 mins via Reading) 	

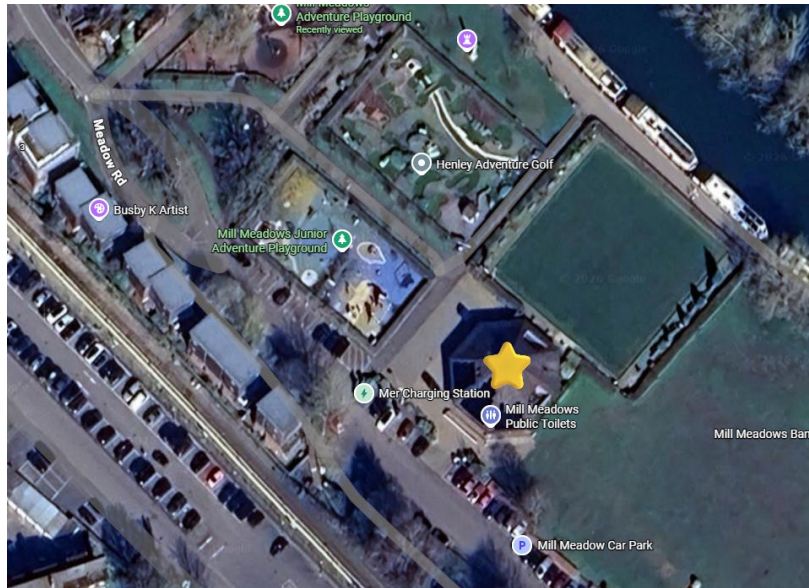
Walk: From the station, you can walk to Mill Meadows in 3–5 minutes. Leave the station → walk straight ahead toward the river → Mill Meadows is immediately visible

Car: Free parking is available in Mill Lane Car Park, Mill Lane, Henley, RG9 4HD.

Bus: Useful bus routes are, listed below. The best stops are Henley Market Place and Henley Bridge

- X40 / NX40 (River Rapids) – Oxford ↔ Wallingford ↔ Henley ↔ Reading
- 33 – Wallingford ↔ Henley
- 800 – High Wycombe ↔ Henley

Address and images of meeting point: Henley Pavillion, Mill Meadows, Meadow Rd, Henley-on-Thames RG9 1BE



15	19-Jun	Fri	Start: Marlow – Meet outside Marlow Museum, in Pound Lane Car Park. what3words.com/late.simulations.puns	End: Cookham - Stanley Spencer Gallery. What3words///tester.puzzle.space
----	--------	-----	--	--

Hosted by: Thames Path National Trail Volunteers

			<p>Date: 19th June</p> <p>Start time: 10:30am</p> <p>Estimated finish time: 1pm</p> <p>Difficulty: easy / moderate</p> <p>Distance: 4.5miles / 7.2km</p> <p>Type: linear</p> <p>Description: This walk is a favourite with our Thames Path engagement officer Clare! Marlow to Cookham is a gentle and picturesque walk through classic Buckinghamshire riverside scenery. Leaving Marlow, the path follows the broad, graceful river past wooded banks, open meadows and quiet backwaters, with views often opening across the water to grazing fields and elegant riverside homes. The route feels calm and leisurely, passing Bourne End where the river widens before curving onward through peaceful countryside. As Cookham approaches, the setting becomes more village-like, with moorings, boats and riverside paths leading into the historic heart of Cookham, long associated with the Thames and its tranquil landscape.</p> <p>Transport:</p> <p>Train: Frequent trains run to Marlow Station:</p> <p>Branch line via Maidenhead. Easy connections from: London Paddington (via Maidenhead), Reading (via Maidenhead), High Wycombe (via Maidenhead or bus alternatives)</p>
--	--	--	--

Walk: from station to Higginson Meadow, distance: 0.5 miles, time: 8–10 minutes. Route: Station → Station Approach → High Street → Marlow Bridge → Higginson Park entrance

Bus: Several buses pass through Marlow. The best stops are Marlow High Street and Marlo Bridge, both are around 3 minutes walk to Higginson Meadow.

- **800** – High Wycombe ↔ Marlow ↔ Reading
- **850** – High Wycombe ↔ Marlow ↔ Henley (limited times)
- **X74 / local services** – surrounding villages (varies by day)

Car / Parking: Paid parking can be found in Pound Lane Car Park, a short walk from the meeting point.

Address and images of meeting point: Higginson Meadow, High St, Marlow SL7 1AW



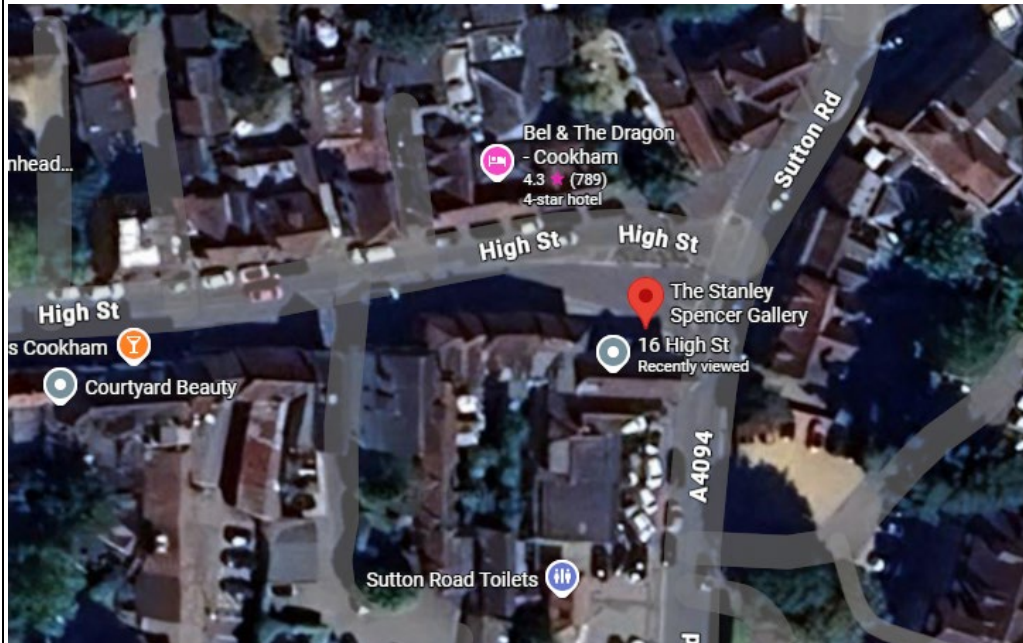
16	20-Jun	Sat	Start: Cookham - Stanley Spencer Gallery. What3words:///tester.puzzle.space	End: Eton Bridge (meet on the bridge – pedestrianised). What3words:///linked.evenly.frames
Hosted by: MUFC Walks				
			<p>Date: 20th June</p> <p>Start time: 10am</p> <p>Estimated finish time: 4pm</p> <p>Difficulty: moderate</p> <p>Distance: 9.7miles / 16km</p> <p>Type: linear</p> <p>Description: This walk will guide us between Cookham to Eton on a varied and rewarding riverside walk as the Thames moves from quiet village surroundings into the grandeur of Windsor. Leaving Cookham, the path follows peaceful stretches of river bordered by meadows, trees and occasional riverside homes, with a calm, rural feel for much of the route. The walk remains close to the water as it passes Bray, where wooded banks and open reaches alternate with glimpses of boats and riverside buildings. As Eton and Windsor draw nearer, the scenery becomes increasingly formal and historic, with views of Windsor Castle rising above the river. The walk finishes at Eton, where bridges, college buildings and river activity create a lively and memorable sense of arrival along one of the Thames Path's most iconic stretches.</p> <p>Transport:</p> <p>Train: Easiest option. Cookham Station is on the Cookham branch line via Maidenhead. Routes can be found via:</p> <ul style="list-style-type: none"> • London Paddington → Maidenhead (Great Western Railway) • Elizabeth line also stops at Maidenhead • Change at Maidenhead → Cookham (branch line) 	

Walk: From Cookham station it is around a 10-minute level walk to the Gallery along Station Hill and into the High Street.

Bus: Buses run by Carousel Country 37 / 37B on the route between High Wycombe ↔ Windsor (via Maidenhead & Bourne End). Best stop is Cookham Village Memorial, which is a 5 minute walk to the Gallery.

Car: You can drive to Cookham. There is limited free on-street parking nearby, however, be careful as it often has a 2-hour limit. There is also a free public car park just around the corner with limited spaces. 📄 What3Words: ///faced.lamps.swim

Address and images of meeting point: High St, Cookham, Maidenhead SL6 9SJ



17	21-Jun	Sun	Start: Eton Bridge (meet on the bridge – pedestrianised). https://w3w.co/linked.evenly.frames	End: Staines - Memorial Gardens. What3words///sorters.riders.violin
----	--------	-----	--	---

Hosted by: Windsor River Watch

			<p>Date: 21st June</p> <p>Start time: : 10am</p> <p>Estimated finish time:</p> <p>Difficulty: moderate</p> <p>Distance: 8 miles / 13km</p> <p>Type: linear</p> <p>Description: This walk will follow the river from the historic of Eton along the river to Staines. re open, suburban landscape. From Eton, the path runs close to the water, passing meadows, islands and tree-lined banks, with frequent views back towards Windsor before the scenery gradually softens. The route remains largely level and easy, weaving past riverside parks, marinas and quiet backwaters as the Thames broadens and becomes busier with boats. Approaching Staines, bridges and urban features reappear, marking the walk’s transition from royal and collegiate surroundings to a lively riverside town with a strong connection to the river.</p> <p>Transport:</p> <p>Train: You have a choice of 2 stations –</p> <p><i>Windsor and Eton Central Station</i>, a 5 minute walk to Eton Bridge. This station has trains from:</p> <ul style="list-style-type: none"> - London Paddington → Slough (Great Western Railway or Elizabeth line) - Slough → Windsor & Eton Central (6-minute branch line) <p><i>Windsor & Eton Riverside Station</i>, a 10 minute walk from the bridge. This station has train from:</p>
--	--	--	--

- London Waterloo (South Western Railway). Journey time approx. 50–55 minutes

Bus: Many bus routes go via Eton and Windsor. The key services stopping near Eton Bridge are:

- 702 (London Victoria ↔ Windsor)
- 703 (Bracknell / Heathrow ↔ Windsor)
- Local services including 8, 15, 81
- Nearest stops:
 - Windsor Theatre Royal / High Street / Arthur Road

Car: The bridge itself is pedestrianised, but there is parking nearby at King Edward VII car park, River Street or Alma Road car parks (all a short walk to the bridge). Charges apply and expect heavy congestion and limited parking during weekends and holidays.

Address: Windsor Eton Bridge UK, Windsor Rd, Eton, Slough SL1 2EJ

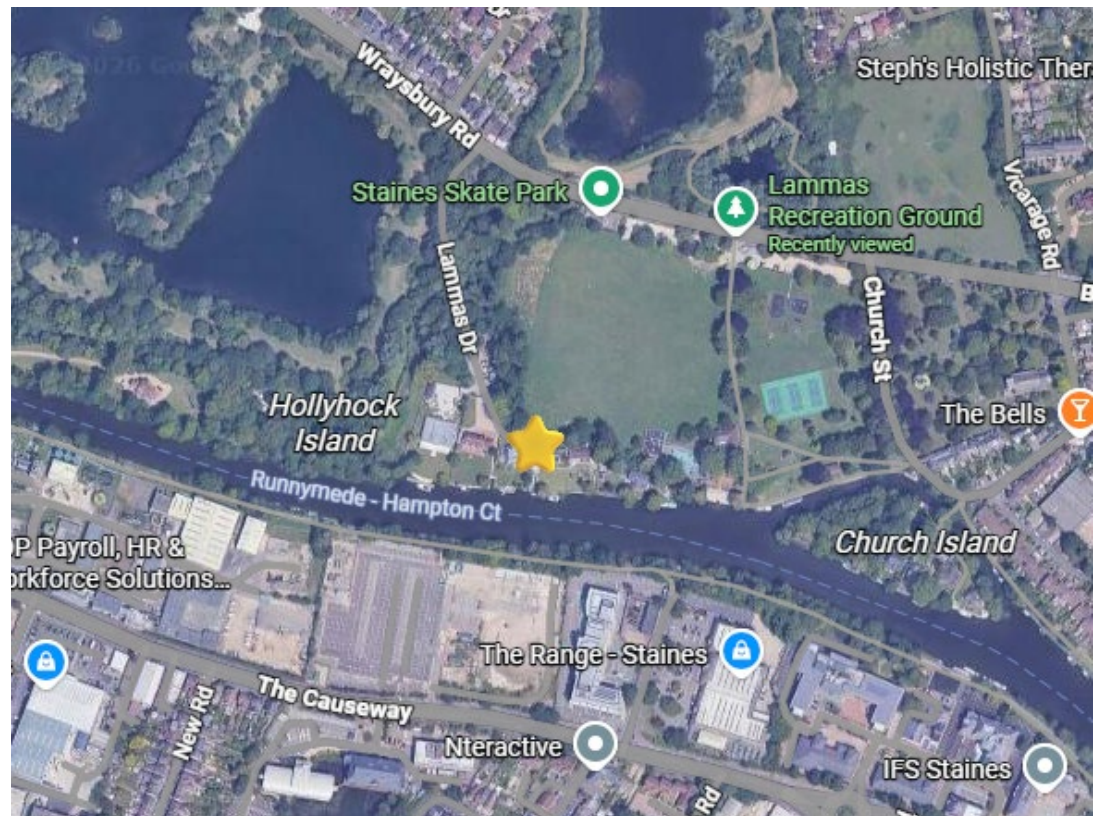


18	22-Jun	Mon	Start: Staines - Memorial Gardens. What3words:///sorters.riders.violin	End: Walton-on-Thames- Felix Road Rec Ground. What3words:///ranged.pencil.river
Hosted by: Waterway Pickers Staines				
			<p>Date: 22nd June</p> <p>Start time: 10am</p> <p>Estimated finish time:</p> <p>Difficulty: moderate</p> <p>Distance: 8 miles / 13km</p> <p>Type: linear</p> <p>Description: This walk from Staines to Walton-on-Thames is a pleasant and gently changing walk as the river flows through green suburban landscapes and well-used open spaces. Leaving Staines, the path follows the broad Thames past riverside parks, tree-lined banks and quiet residential edges, with the water remaining a constant presence beside the route. Islands, moorings and boats add interest along the way, while grassy towpaths and level terrain make for a relaxed walk. As Walton approaches, the surroundings become slightly busier, with bridges, riverside developments and cafés signalling arrival in a lively Thames-side town that remains closely connected to the river.</p> <p>Transport:</p> <p>Train: There nearest station is Staines, operated by South Western Railway with regular direct trains from London Waterloo (approx. 35–40 minutes)</p> <p>Walk: From Staines station to the Memorial is about 20–25 minutes. Take Thames Street → Lammas Park / Watts Lane.</p> <p>Bus: Several local bus routes stop close to Lammas Park / Staines town centre:</p> <ul style="list-style-type: none"> • 117 – Hounslow / Feltham ↔ Staines 	

- 203 – Hounslow ↔ Staines
- 446 – Hatton Cross ↔ Staines ↔ Chertsey / Woking
- 8 – Slough ↔ Heathrow T5 via Staines

Nearest bus stops: Elmsleigh Bus Station, Two Rivers, Ripley Way. From these stops, it's a 10–15 minute walk to the memorial via Lammas Park.

Address and images of meeting point: Lammas Recreation Ground, 115 Wraysbury Rd, Staines TW18 4UA



19	23-Jun	Tues	Start: Walton-on-Thames- Felix Road Rec Ground. What3words///ranged.pencil.river	End: Kingston-upon-Thames. Outside the Boaters Inn. What3words///slide.jars.alone
Hosted by: Thames Landscape Strategy				
			<p>Date: 23rd June</p> <p>Start time: 10:30am</p> <p>Estimated finish time: 2:30pm</p> <p>Difficulty: moderate</p> <p>Distance: 7.4 miles / 12 km</p> <p>Type: linear</p> <p>Description: This walk from Walton-on-Thames to Kingston offers a lively yet scenic riverside walk as the Thames flows steadily into south-west London. Leaving Walton, the path passes beneath trees and alongside open riverside spaces, with boats, houseboats and marinas bringing a strong sense of river life. The route alternates between quieter green stretches and more developed sections near Esher and Thames Ditton, always staying close to the water. As Kingston approaches, the surroundings become increasingly urban and energetic, with wider paths, pedestrians and riverside cafés.</p> <p>Transport:</p> <p>Train:</p> <p>Nearest stations are:</p> <ul style="list-style-type: none"> • Walton-on-Thames Station – approx. 1.8 miles away • Hershams Station – approx. 1.6 miles away 	

Both stations are on the South Western Railway main line from London Waterloo.

Walk: From the station to Felix Road Rec Ground -35–45 minutes from Walton station and 30–40 minutes from Hersham

Bus: Bus route 564 (Falcon Buses)

This is the most direct bus service for the Felix Road area.

- Route: Hersham → Walton-on-Thames → Xcel Leisure Centre
- Key stops near the ground:
 - Annett Road
 - Lancaster Court
 - Carlton Road

Car: There is limited on-street parking near Felix Road, but please be mindful of residents and any local restrictions

Address and images of meeting point: Felix Road Recreation Gound, 68 Felix Rd, Walton-on-Thames, KT12 2LD



20	24-Jun	Weds	Start: Kingston-upon-Thames. Outside the Boaters Inn. What3words///slide.jars.alone	End: Kew Bridge - just East of Kew Bridge in green space. What3words///scouts.noted.think
Hosted by: Thames Landscape Strategy				
			<p>Date: 24th June</p> <p>Start time: 10:30am</p> <p>Estimated finish time: 2:30pm</p> <p>Difficulty: Moderate</p> <p>Distance: 7.5miles / 12 km</p> <p>Type: linear</p> <p>Description: This walk from Kingston to Kew Bridge is an engaging urban riverside section that showcases the Thames at its most lively and varied. Leaving Kingston, the path follows broad towpaths and riverside promenades through rich green spaces such as Ham Lands and Petersham Meadows, where open views, wildlife and a surprisingly rural feel contrast with nearby London life. The route then passes beneath Richmond Hill, with elegant terraces above and long, sweeping views across the river, before entering the bustling stretch through Richmond itself, alive with boats, cafés and walkers. Beyond Richmond Bridge, the path remains close to the water as it skirts the edge of Kew Gardens, finishing at Kew Bridge, where historic, cultural and riverside London meet in a vibrant and memorable setting.</p> <p>Transport:</p> <p>Train: Nearest stations</p> <ol style="list-style-type: none"> 1. Kingston Station <ul style="list-style-type: none"> ○ Main SWR line from London Waterloo ○ Journey time from Waterloo: ~30 minutes 	

- From station: 15-minute walk through town and towards Canbury Gardens

2. Hampton Wick Station

- One stop from Kingston (or short walk over Kingston Bridge)
- From station: 10–12 minute walk along the river path

Bus: Closest bus stops are Latchmere Road and Woodside Avenue, and both are 2–3 minutes' walk from The Boaters Inn

Useful bus routes, 65 (Ealing Broadway ↔ Kingston ↔ Richmond), 671, 691

From central Kingston (Cromwell Road or Eden Street), buses take 5–10 minutes depending on traffic

Walking: From Kingston town centre (Market Place / Bentalls Centre) 10 minutes.

Address: The Boaters Inn, Canbury Gardens, Lower Ham Rd, Kingston upon Thames K T2 5AU



21	25-Jun	Thurs	<p>Start: Kew Bridge - just East of Kew Bridge by Kew Pier. What3words///scouts.noted.think</p> <p>Walkers can also meet at Kew Gardens Underground Station at 11am, to walk to start location. https://www.w3w.co/scales.either.jams</p>	<p>End: Battersea Power Station. What3words///mount.always.impose</p>
----	--------	-------	--	--

Hosted by: Capital Walkers and Thames Strategy Kew to Chelsea

		<p>Date: 25th June</p> <p>Start time: 11am Kew Gardens Underground Station, 11:30am east of the bridge</p> <p>Estimated finish time: 5:30pm</p> <p>Difficulty: moderate / hard (due to length)</p> <p>Distance: 10.8miles / 17km</p> <p>Type: linear</p> <p>Description: This walk from Kew Bridge to Battersea Power Station is a striking walk through some of west and central London's most distinctive riverside scenery. Leaving Kew Bridge, the path follows the broad sweep of the Thames past modern developments and historic wharves, with steady river traffic and long views across the water.</p> <p>We pick up the Thames Path and head east, soon reaching the tranquil expanses of Barnes Wetland Centre, a haven for wildlife set back from the bustle of the city. The route continues through Barnes with its village feel, riverside pubs and elegant houses lining the water.</p> <p>We then approach the striking Hammersmith Bridge, offering fine views both upstream and downstream. From here, the path continues along a particularly scenic stretch of the river toward Putney well known for its strong rowing heritage.</p>
--	--	--

Along this section, you'll pass several historic rowing clubs, including those used during the famous Oxford and Cambridge Boat Race.

After passing under Putney Bridge, the walk continues along the south bank, with wide river views and a steady procession of boats. We then pass Wandsworth Park before reaching the expansive green spaces of Battersea Park, known for its ornamental gardens, lakes, sculptures and peaceful riverside paths.

Continuing onward, we pass Albert Bridge London—one of London's most distinctive bridges—before reaching Chelsea Bridge.

The walk finishes at Battersea Power Station, where the iconic art-deco landmark rises dramatically beside the river, marking a bold and memorable end to this urban section of the Thames Path.

Further details can be found on: <https://www.ramblers.org.uk/go-walking/group-walks/thames-path-30th-anniversary-relay-walk-kew-battersea-power-station>

Transport:

Train: Kew Bridge Station, operated by South Western Railway, with trains from London Waterloo (Journey time: 27–30 minutes).

Kew Bridge station is immediately next to the bridge, so exit the station and you're effectively at your destination. Step-free note: Kew Bridge station does not have step-free access.

Tube: Closest Tube/Overground stations

- Kew Gardens

From Kew Gardens station it is a 20–25 minute walk or 5–10 minutes on the bus

Bus: Routes serving Kew Bridge directly:

Ealing Broadway ↔ Richmond, 110 – Hammersmith ↔ Richmond, 237 – White City ↔ Hounslow, 267 – Fulham ↔ Brentford

Address: Just east of Kew Bridge, before Thames River Boats, Kew Gardens Pier, riverside, Richmond, TW9 3BE



22	26-Jun	Fri	Start: Battersea Power station. https://w3w.co/mount.always.impose	End: Millenium Bridge (outside Tate Modern). https://w3w.co/joke.parts.expert
Hosted by: Capital Walkers				
			<p>Dare: Friday, 26 June 2026</p> <p>Start time: 6:00 pm</p> <p>Estimated finish time: 9:00 pm</p> <p>Difficulty: Moderate</p> <p>Distance: 10.3km / 6.4mi</p> <p>Type: linear</p> <p>This walk forms part of the anniversary celebrations, highlighting one of the most iconic urban sections of the trail. This scenic riverside walk follows a lively stretch of the Thames Path along the south bank of the River Thames, linking historic landmarks, modern architecture and some of London's most famous riverside views.</p> <p>Starting at Battersea Power Station, the route continues along the vibrant South Bank, passing beneath Vauxhall Bridge and offering views towards Westminster. Further highlights include the riverside cultural quarter around the London Eye and Royal Festival Hall, before continuing through one of London's most popular riverside walking areas.</p> <p>The walk finishes beside the impressive Tate Modern, ending at the pedestrian Millennium Bridge, where there are excellent views across the river to St Paul's Cathedral.</p> <p>Full walk details: Thames Path - 30th Anniversary - relay walk - Battersea Power Station to Millennium Bridge - Ramblers</p> <p>Transport: Oyster and contactless accepted on Tube, buses and river boat (within Freedom Pass and Oyster 60+ zone).</p>	

Tube: Battersea Power Station Underground Station, accessed via Northern line (Battersea Extension), zone 1. Station exits straight into the Power Station development.

Train: National Rail (train, then a short walk). Nearest stations

- Battersea Park (Southern trains) – ~10 minutes' walk
- Queenstown Road (Battersea) – ~12 minutes' walk

Bus: good local coverage. Buses stop on Battersea Park Road, Nine Elms Lane, and around the development.

Key routes include: 44, 137, 344, 436, 452.

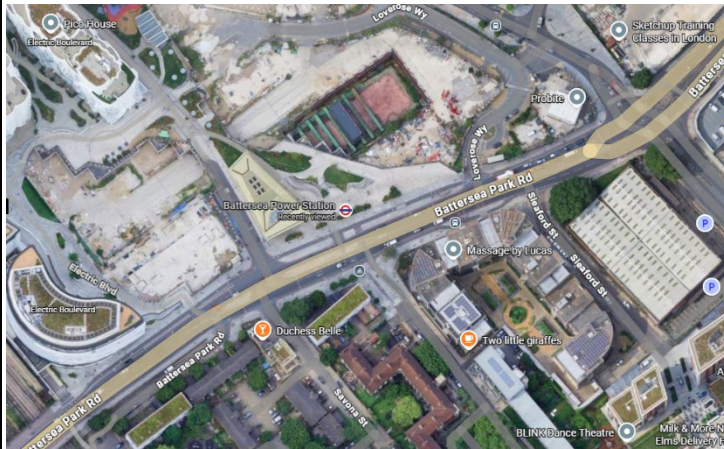
River Bus (scenic option):

Battersea Power Station Pier, 'Uber Boat' run by Thames Clippers. Route is called RB6 and gives direct river links to:

- Embankment (~15 mins), Blackfriars (~20 mins), Canary Wharf (~40 mins)

Oyster and contactless accepted, just like Tube and buses - within Freedom Pass and Oyster 60+ zone.

Address: Battersea Power Station Underground, Battersea Power Station, Kirtling St, Nine Elms, London SW11 8AL



23	27-Jun	Sat	Meeting Point: South-East exit of Blackfriars Rail station (i.e. the exit on the south bank, downstream side https://w3w.co/rally.turned.manage)	End: Greenwich - Cutty Sark. What3words///asserts.vibrates.intro
----	--------	-----	---	---

Hosted by: South Bank Ramblers

			<p>Date: Saturday, 27 June 2026</p> <p>Start time: 10:00 am</p> <p>Estimated finish time: 1:45 pm</p> <p>Difficulty: Moderate</p> <p>Distance: 12km / 7.5mi</p> <p>Type: linear</p> <p>This is the penultimate stage in the Thames Path Relay happening throughout June to celebrate the 30th anniversary of the Thames Path National Trail. The walk is open to anyone - you do not need to be a Ramblers member. No booking required. No need to email or text - just turn up.</p> <p>Join us for a scenic riverside walk along the Thames from Blackfriars to Greenwich, following the south bank through Bankside, Bermondsey and Rotherhithe (once known as Redriff), with historic wharves, docks and the Thames Tunnel reflecting London's rich maritime and engineering heritage.</p> <p>Continuing through Deptford, the route offers a fusion of past and present — from echoes of 17th-century London to the vibrant pulse of today's city — before concluding in the regal setting of Greenwich at the iconic Cutty Sark.</p> <p>The finish time is an estimate only and will depend on several factors such as the weather, the walking speed of the group and the number of breaks taken.</p>
--	--	--	---

For full walk details: [THAMES PATH 30TH ANNIVERSARY RELAY WALK - MILLENIUM BRIDGE TO CUTTY SARK \(LINEAR\) - Ramblers](#)

Transport: Meeting point is just outside the South-East exit of Blackfriars Rail station (i.e. the exit on the South bank, downstream side). Exact location: What3words <https://w3w.co/wiring.town.scope>

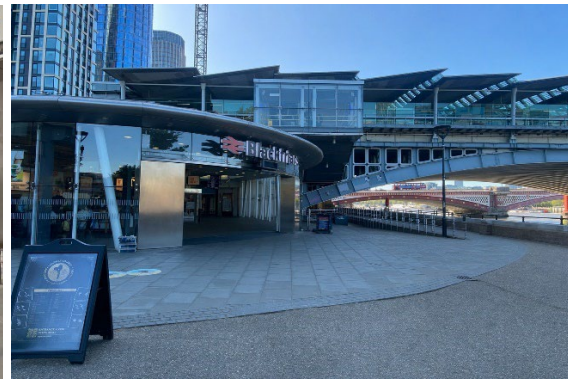
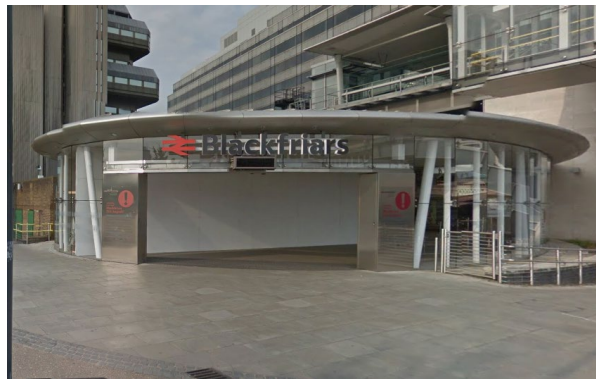
Train: Blackfriars Station is served by National Rail (Thameslink and Southeastern)

Tube: Underground (Circle and District lines).

Bus: Routes with direct stops at Blackfriars Station (these routes stop at the station or within 1–2 minutes' walk)

- 4 – Archway ↔ Blackfriars Station
- 40 – Dulwich Library ↔ Clerkenwell Green
- 63 – Honor Oak ↔ King's Cross
- 56 – St Bartholomew's Hospital ↔ Whipps Cross
- 15 – Trafalgar Square ↔ Blackwall (near North Entrance)

Address and images of meeting point: outside the South-East exit of Blackfriars Rail station (i.e. the exit on the south bank, downstream side).”



24	28-Jun	Sun	Start: Greenwich - Cutty Sark. What3words///asserts.vibrates.intro	End: Woolwich Foot Tunnel / Royal Arsenal. What3words///every.single.pines Relay celebrations- Woolwich Works https://w3w.co/stable.sweep.spot
----	--------	-----	--	---

Hosted by: West London Ramblers

			<p>Date: Sunday 28th June</p> <p>Start time: 11:00 am</p> <p>Estimated finish time: 1:45 pm</p> <p>Difficulty: Easy</p> <p>Distance: 8.9km / 5.5mi</p> <p>Type: linear</p> <p>This is the final stage of the relay walk that has been taking place throughout June to celebrate the 30th anniversary of the Thames Path National Trail. Everyone welcome - no need to book - just turn up and enjoy the walk.</p> <p>The walk starts at the Cutty Sark and then passes the Old Royal Naval College, a UNESCO World Heritage Site, and continues along the Thames Path with good views of Canary Wharf to reach the O2 Centre (the former Millennium Dome). There is an impressive Art Trail around the North Greenwich Peninsular with sculptures by many famous artists including Damien Hirst, Antony Gormley and Gary Hume.</p> <p>We will have a short break near the O2 so you might like to bring a drink and snack.</p> <p>The highlight of the final section of the walk is the view of the Thames Barrier, completed in 1984, to protect London from being flooded by high tides.</p>
--	--	--	---

The Thames Path officially ends at the Woolwich Foot Tunnel where it meets the England Coast Path. After a short celebration the walk will continue to Woolwich where there are good refreshment opportunities and public transport back to central London.

Full walk details: [Thames Path 30th Anniversary Relay Walk: CUTTY SARK TO WOOLWICH - Ramblers](#)

Transport:

Train: The closest station is Cutty Sark for Maritime Greenwich (DLR). Alternatively, there is Greenwich Railway Station (Southeastern services) about 15 minutes walk away from the Cutty Sark.

Bus: Buses stop within 1–3 minutes' walk of the ship at “Greenwich Town Centre / Cutty Sark”, “Greenwich Church Street”, and National Maritime Museum stops.

Main bus routes

- 129 – Lewisham ↔ Greenwich ↔ North Greenwich
- 177 – Peckham ↔ Greenwich ↔ Woolwich
- 188 – Tottenham Court Road ↔ Waterloo ↔ Greenwich
- 199 – Canada Water ↔ Greenwich ↔ Lewisham
- 286 – Eltham ↔ Blackheath ↔ Cutty Sark
- 386 – Woolwich ↔ Greenwich ↔ Blackheath

River Boat (scenic option):

Pier location for Cutty Sark - Greenwich Pier. Route name RB1 Uber Boat, operated by Thames Clippers.

Address and images of meeting point: Cutty Sark, near Greenwich Foot Tunnel South, Greenwich Foot Tunnel, London SE10 9HT

