

About the Storywalks

Storywalks are perfect for exploring your local area to discover its history and customs, wildlife and plants, tall tales and legends and some of the extraordinary stories about the Somerset Coast.

Throughout the walks you'll learn some old Somerset dialect and have fun working out how to pronounce words like **'skitty vamps'** (it's skeet'ee-vaam's) and find out what **'clinker-vells'** and **'farnticles'** are. There's over 130 words to discover.

Somerset's coast has a history of smugglers and shipwrecks, daring sea rescues and bustling trading ports. It is sprinkled with the remains of castles and fortifications dating back to the Civil war of 1642.

We have our fair share of spooky tales here too, see if you can find out where the serpent of Ker Moor hid, who the whistling ghost was and how smugglers used ghost stories to keep prying eyes away.



The wreck of the Nornen at Berrow

The beaches and cliffs between Lilstock and Blue Anchor are famous for their rock formations and fossils. On one you can see formations from the Jurassic to the Triassic, and woolly mammoth remains have been found there.



Somerset's coastal landscape has inspired poets and artists alike. See if you can find the places that inspired the poems of Wordsworth and Coleridge and where JMW Turner was when he sketched Dunster Castle and Conygar Tower.

All along the coast you'll discover some of Somerset's wildlife and plants. Find out where the rare white rock rose grows, which seaweeds you can eat and where you can hear a curlew calling.



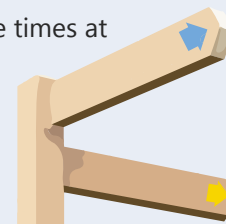
White rock rose

Stay safe and follow the Countryside Code on your Storywalk



You can see the Countryside code at www.gov.uk/government/publications/the-countryside-code. Please follow it throughout your walk and remember:-

- Keep to the path and stay away from cliff edges
- Shores and estuaries may have fast incoming tides and sinking sand or mud, always follow local advisory signs
- Take special care to keep children and dogs safe
- If you arrive by car, park in designated areas. Do not park on the verge or in gateways and passing places
- Do not disturb local wildlife or sensitive habitats and enjoy wildflowers and plants where they are
- If you bring your dog on a Storywalk please ensure that it is always under effective control, and on a lead when near livestock and wildlife, especially birds
- Always clean up after your dog and dispose of dog waste responsibly
- Put litter in bins or take it home with you
- Follow the guidance on local advisory signs
- For walks on the beach check tide times at tidetimes.org.uk to ensure that you can complete the walk safely
- In an emergency Dial 999 or 112 and ask for the coastguard



Tell us what you think...

If you have completed a Storywalk let us know what you think, perhaps post a picture of your walk with the hashtag **#ecpstorywalks**; we might give you a mention on our Facebook, Instagram and Twitter feeds - **@ecpsomerset**

Learning more

To delve deeper into the nature and local history of the Storywalk destinations visit local libraries and museums in the area or ask at the tourist information centres in Minehead, Dunster, Watchet or Burnham-on-Sea.

For more information and resources or to report a problem on the path, go to... **somerset.gov.uk/england-coast-path**

Photos ©Chris Jelley, except black and white images ©The Francis Frith Collection

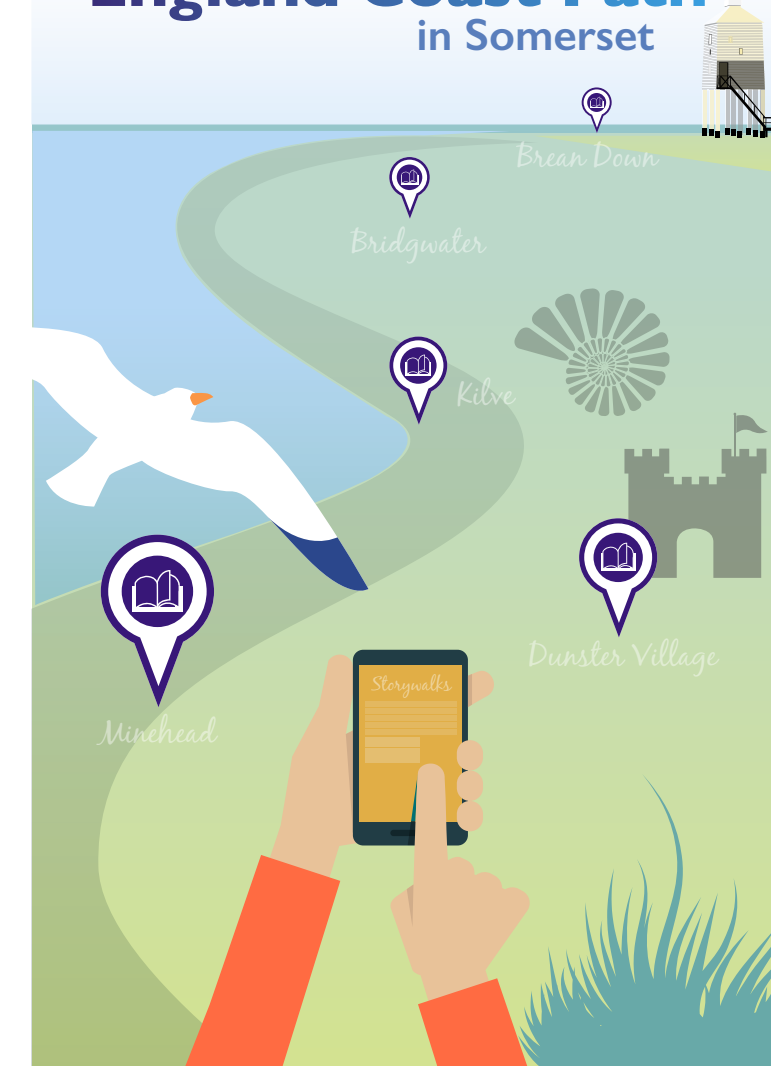


mineheadbid



Storywalks

Along the **England Coast Path** in Somerset



Twenty walks offering a skimming stone of facts, myth, history and nature linked to location

Introduction

The England Coast Path Storywalks are designed to offer a skimming stone of interesting facts, myth, history, nature and tales linked to location. The walks are intended to be read aloud to family and friends to embellish your experience of the walk locations.

Storywalks are accessed on the internet using a tablet or smart phone. The walks all begin near parking areas and there may be a charge for parking. All walking directions are provided within the Storywalks, but please take note of signs requesting your cooperation along the route.

You do not need to download anything just scan the QR code here or visit englandcoastpath.storywalks.info.

Make sure you turn on the location finder in your phone browser.



The England Coast Path

The England Coast Path is a new national walking route that will follow the entire coast of England. For the first time people will have the right of access around all our open coast.

When all sections are open, it will be the longest waymarked coastal path in the world at 2,795 miles or 4,500 kilometers.

To find out more visit www.nationaltrail.co.uk/trails/england-coast-path

Storywalks

- 1 Brean Down L
- 2 Berrow S
- 3 Burnham-on-Sea M
- 4 Bridgwater M
- 5 Combwich S
- 6 Steart Marshes M
- 7 Stolford M

- 8 Lilstock M
- 9 10 Kilve S
- 11 St Audries M
- 12 Watchet S
- 13 Blue Anchor to Dunster L
- 14 Dunster Village S
- 15 17 Minehead S
- 18 20 Minehead S



The Minehead Hobby Horse



Detail of the statue of Yankee Jack on The Esplanade in Watchet



Top image: Burnham-on-Sea, Dan Dare's Space Ship Pony Cart 1960
Below image: Donkeys on the Sands 1907



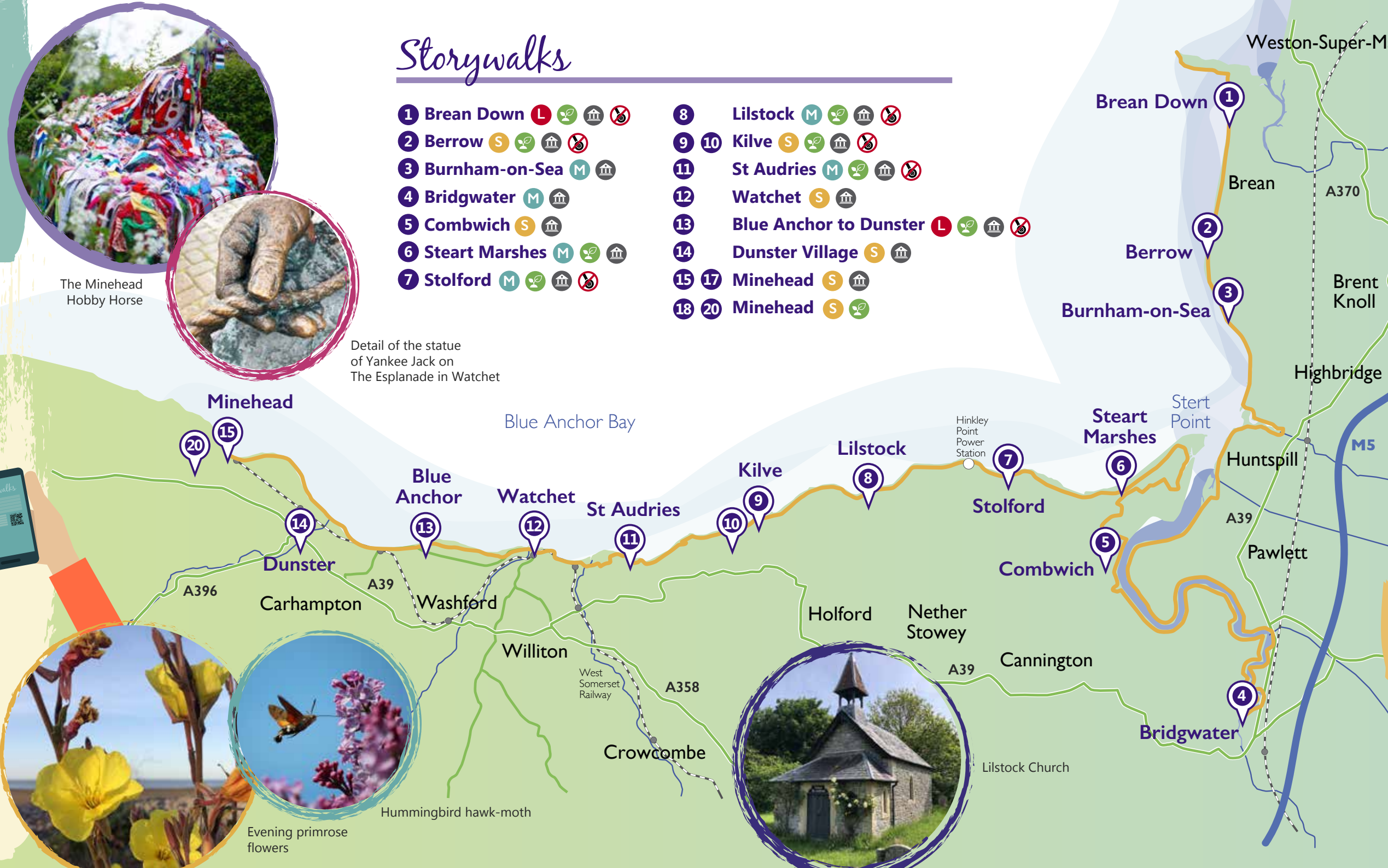
Evening primrose flowers



Hummingbird hawk-moth



Lilstock Church



Key

- England Coast Path
- Storywalk
- S Short walk (under 1 mile)
- M Medium walk (1-2 miles)
- L Long walk (over 2 miles)
- Nature
- Heritage
- Unsuitable for wheels