

# Try a Trail easy access walks



## Cleveland Way

NATIONAL TRAIL



### CORNELIAN BAY, near Scarborough

This is a short, moderate walk on a variety of surfaced and grass paths, with a maximum gradient of 1:12. This quiet coastal walk offers views north towards Scarborough and south to Filey. The slumped cliffs are heavily wooded and provide a haven for wildlife. Very few people, if any, venture down the cliffs; who knows, dinosaurs may still linger there!

The walk is likely to be suitable for people with impaired mobility or with a pushchair, wheelchair or mobility scooter.

The walk has no steps or stiles. Path conditions will vary depending on the weather.

#### Distance

The linear walk is virtually level for the whole 1 mile (1½km) route (there and back)

#### Path details

Compacted stone and earth provide the first section of the path followed by a fairly level stretch of short grass. Towards Knipe Point the route rises slightly and becomes a little rougher.

#### Start

This walk starts off Cornelian Drive at Wheatcroft south of Scarborough (Map: OS Explorer Sheet 301) Grid ref: 055861 There is ample roadside parking in the vicinity.

#### Route

Walk past the water works and turn right along the Cleveland Way. Follow the path to Knipe Point and either return by the same route or turn right up to the road, turn right again and finally right into Cornelian Drive.

#### Nearest facilities

The nearest accessible toilets are at the Scarborough Sports Centre. This is about ½ mile from the walk on the A165 road towards Scarborough.

#### How to get there

From Scarborough follow the Filey Road past the university. At the roundabout bear left (do not follow the new bypass) Turn first left into Cornelian Drive.

#### Points of Interest

The cliffs in the vicinity of the walk are composed largely of glacial clays, sands and gravels left behind as the ice melted at the end of the Great Ice Age some 10/12 000 years ago.

They are very susceptible to collapse as a result of both wave action and rainwater. In 1993, just a mile north of here, the Holbeck Hall Hotel collapsed as a result of a large and sudden landslide attracting publicity around the world. There have been several slips at Knipe Point over the years the latest, in 2008 resulting in the demolition of several bungalows.



# CORNELIAN BAY, near Scarborough

1 P

From Cornelian Drive walk or drive down the tarmac access road to the water works.

2

Follow the path to the right signed Cleveland Way

3 VP



4



4

Continue along this path

5

A short stretch of boardwalk crosses a small gully

6

The route leave the wooded area and follows a grassy field edge path.

7 VP 1:12 300m

The grass path rises gradually. There are good views in this vicinity south to Gristhorpe cliffs and Filey Brig.

6



7



8

Where the path turns sharp right return by the same route or follow the path right to return via the road.

9 1:12 300m

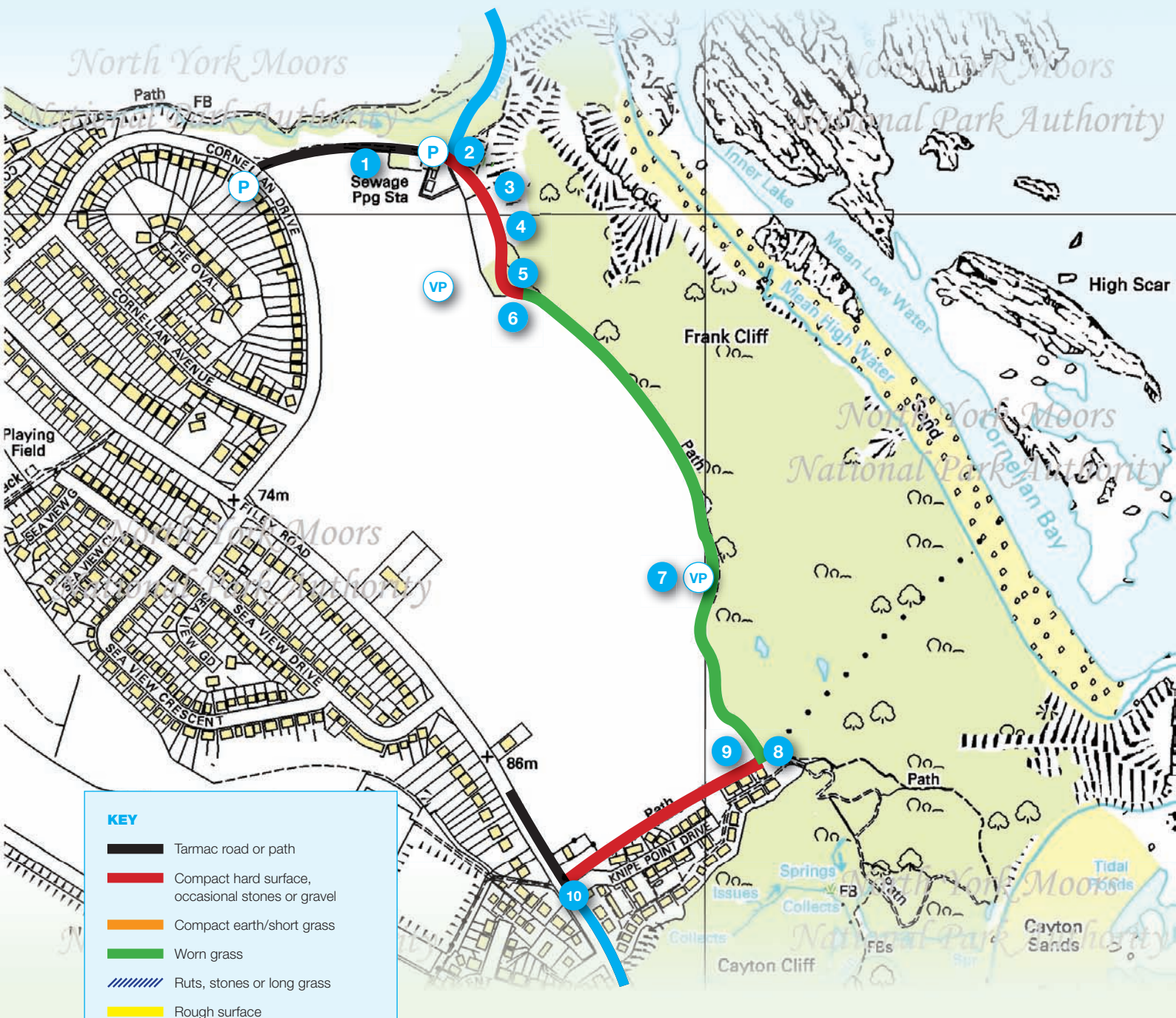
10

A gap gives access to Filey Road. Turn right to return to Cornelian Drive.





# CORNELIAN BAY, near Scarborough



## KEY

- Tarmac road or path
- Compact hard surface, occasional stones or gravel
- Compact earth/short grass
- Worn grass
- Ruts, stones or long grass
- Rough surface
- Continuation of National Trail

- G Gate
- P Parking
- S Seat
- I Information Panel
- VP View Point
- WC Toilets
- 1 Photo Location

All route photographs are taken in the direction of travel, unless otherwise stated.

This map is reproduced from Ordnance Survey digital map data.  
© Crown copyright 2010. All right reserved.  
Unauthorised reproduction infringes Crown copyright  
and may lead to prosecution of civil proceedings.  
**North York Moors National Park Authority**  
Licence No. 1000221930 © North York Moors National Park 2010

0 250 500  
Metres