

Try a Trail easy access walks

Robin Hood's Bay

An easy walk, with maximum gradients of 1:8 for 20 metres. It is likely to be suitable for people with impaired mobility or with a pushchair, wheelchair or mobility scooter.

This short, classic walk offers one of the most spectacular views over the village of Robin Hood's Bay and across to the magnificent cliffs of Ravenscar. On a clear day the distant headland of Flamborough can be seen over 30 miles away.

These walks have no steps or stiles. Conditions will vary depending on the weather.



Cleveland Way

NATIONAL TRAIL



Distance

The complete walk (there and back) is about 3/4 mile (1.2k)

Path details

After leaving the tarmac footpath the route continues along a compacted limestone path on average 1 metre wide with only slight gradients. Although a little bumpy in parts the route is wheelchair accessible including the two gates.

Start

The walk starts at the Station Car Park (Map: OS Outdoor Leisure NYM East). Grid ref 949055. The car park is Pay & Display except during the winter months

Route

From the car park the walk crosses the road and at the end of Mount Pleasant North joins the cliff path to pass in front of the houses before emerging onto the cliff top. Follow the path to the seat and viewpoint and return by the same route or a parallel path through the field.

Nearest facilities

The nearest accessible toilets are in the station car park (closed in winter). There is ramped access for refreshments at the Grosvenor Hotel opposite the car park and at the Victoria Hotel at the top of the hill down to the old village.

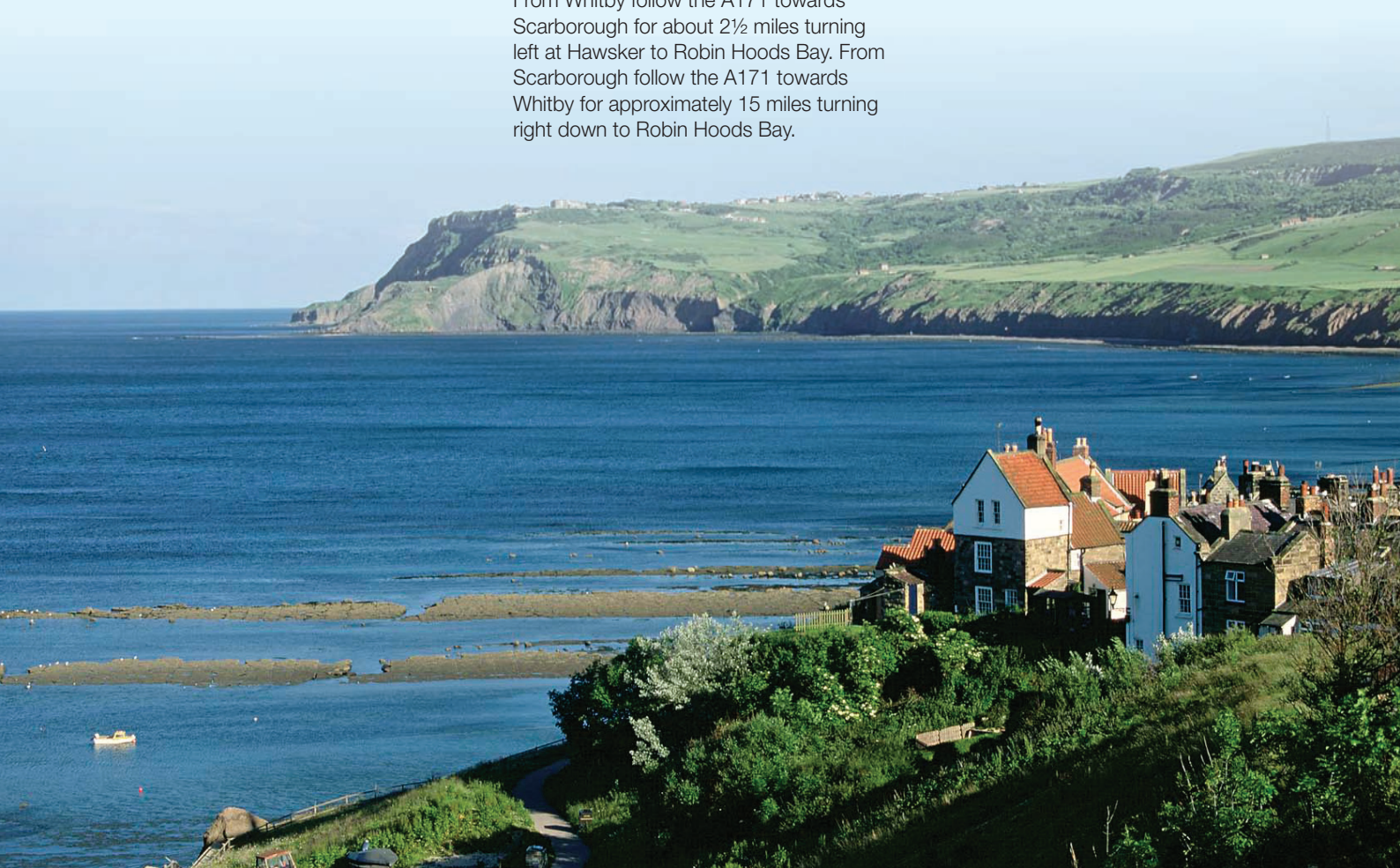
How to get there

From Whitby follow the A171 towards Scarborough for about 2½ miles turning left at Hawsker to Robin Hoods Bay. From Scarborough follow the A171 towards Whitby for approximately 15 miles turning right down to Robin Hoods Bay.

Points of interest

There is an information panel near the entrance to the car park and another at the end of the walk which describes the history and use of the rocket post from which Rocket Post Field takes its name.

From the viewpoint it is easy to appreciate how vulnerable the village is to the ravages of the sea. Over 200 houses have been lost to coastal erosion in about the same number of years. The high sea wall, built in 1975, now protects the houses clinging to the cliff edge. Additional defence in the form of rock armour was placed in the early 21st century as the sea was gradually cutting into the end of the high wall.



Robin Hood's Bay



Leaving the car park (Pay & Display) the tarmac path descends for 20m at 1:8 to the main road.



Follow the level road along Mount Pleasant North for 145m.



Cross the road, rising slightly, and follow the Cleveland Way through the gate in front of the houses.



The path from here to the end of the walk is compacted limestone, occasionally lumpy. After 150m a second gate gives access to Rocket Post Field.



The next section of path is level with a very slight camber.



The path now rises gently at 1:13 for 115m to reach the seat and viewpoint.

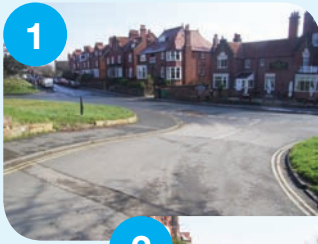
This is the end of the wheelchair access path. Return by the same route.



Walkers may continue for another 50 metres along a grass and earth path to a second seat and viewpoint.

Rocket Post Field is National Trust property and is in Open Access.

As an alternative return route for walkers, enter the field via the kissing gate and walk back to the first kissing gate.



KEY

- Tarmac road or path
- Compact hard surface, occasional stones or gravel
- Compact earth/short grass
- Worn grass
- Ruts, stones or long grass
- Rough surface
- Continuation of National Trail
- G Gate
- P Parking
- S Seat
- I Information Panel
- VP View Point
- WC Toilets
- 1 Photo Location

All route photographs are taken in the direction of travel, unless otherwise stated.

This map is reproduced from Ordnance Survey material with permission of Ordnance Survey on behalf of the controller of Her Majesty's Stationary Office.
© Crown copyright.
Unauthorised reproduction infringes Crown copyright and may lead to prosecution of civil proceedings.
North York Moors National Park Authority
Licence No. 100021930 2009

